





krisjensen edkohler

Search

[Advanced Search](#)

-  [Feed for this query](#)
-  [Tweet these results](#)

Show tweets written in:

Any Language

Trending topics:

- [#thisrelationshipisover](#)
- [#andthenihitmydougie](#)
- [#offensivecompliments](#)
- [Discovery Channel](#)
- [Nano](#)
- [iPods](#)
- [Obina](#)
- [Black Ops](#)
- [Mega Sena](#)
- [Jason Derulo](#)

Nifty queries:

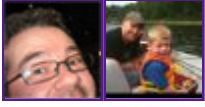
- [cool filter:links](#)
- ["is down"](#)
- [movie :\)](#)
- ["happy hour" near:SF](#)
- [#haiku](#)
- ["listening to"](#)
- [love OR hate](#)
- [flight :\(](#)

1.05 seconds

Results for krisjensen edkohler



[edkohler](#): [@krisjensen](#) Fun chat. Let's grab a beer and solve the world's problems sometime. less than a minute ago via [TweetDeck](#) · [Reply](#) · [View Tweet](#) · [Show Conversation](#)



• [edkohler](#): [@krisjensen](#) [@mnforward](#) "job providers" like [@target](#) have been cutting jobs. Could you or [@bmcclung](#) explain the disconnect? 3 minutes ago via [TweetDeck](#) · [Reply](#) · [View Tweet](#) · [Show Conversation](#)



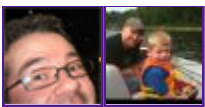
• [krisjensen](#): It was nice conversing [@edkohler](#) but my pillow beckons. Thanks for the chat. Talk again on the subject sometime. 4 minutes ago via [web](#) · [Reply](#) · [View Tweet](#)



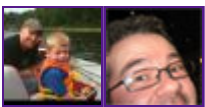
• [krisjensen](#): [@edkohler](#) ...through mergers/acquisitions and the natural cycle of competition. Big & Small biz are both critical to the economy. 9 minutes ago via [web](#) · [Reply](#) · [View Tweet](#) · [Show Conversation](#)



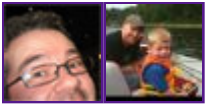
• [krisjensen](#): [@edkohler](#) I agree that startups/small business generate the most new jobs, but long term many of those jobs "migrate" to larger corps... 11 minutes ago via [web](#) · [Reply](#) · [View Tweet](#) · [Show Conversation](#)



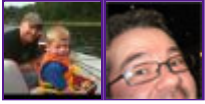
• [edkohler](#): [@krisjensen](#) The [@mnforward](#) crowd does not represent the startups who create new good jobs. <http://bit.ly/d3yr0j> (expand) 15 minutes ago via [TweetDeck](#) · [Reply](#) · [View Tweet](#) · [Show Conversation](#)



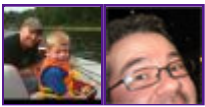
• [krisjensen](#): [@edkohler](#) So, if I read you correctly, you make the assumption that [@mnforward](#) backers are not responsible corporations? Why? 20 minutes ago via [web](#) · [Reply](#) · [View Tweet](#) · [Show Conversation](#)



- [edkohler](#): [@krisjensen](#) Agreed. Which is why [@mnforward](#) backers are more likely to kick savings to shareholders than hire people with the tax savings.
24 minutes ago via [TweetDeck](#) · [Reply](#) · [View Tweet](#) · [Show Conversation](#)



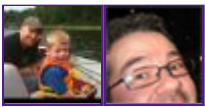
- [krisjensen](#): [@edkohler](#) If corps are responsible they will use tax breaks to grow their companies, benefiting shareholders, labor and the state coffer
25 minutes ago via [web](#) · [Reply](#) · [View Tweet](#) · [Show Conversation](#)



- [krisjensen](#): [@edkohler](#) I think that responsible corp. leadership means finding the best use of every dollar, incl prod R&D and manufact (labor).
26 minutes ago via [web](#) · [Reply](#) · [View Tweet](#) · [Show Conversation](#)



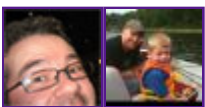
- [edkohler](#): [@krisjensen](#) Do you think that [@mnforward](#) backers would actually invest corporate tax cut savings into MN labor to offset revenue losses?
30 minutes ago via [TweetDeck](#) · [Reply](#) · [View Tweet](#) · [Show Conversation](#)



- [krisjensen](#): [@edkohler](#) ...corp shareholders know not to kill the goose that lays the golden egg by taking too much profit, choking off growth.
35 minutes ago via [web](#) · [Reply](#) · [View Tweet](#) · [Show Conversation](#)



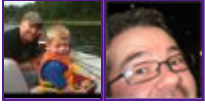
- [krisjensen](#): [@edkohler](#) Not without fail. Shares of a corp. almost always go up after large layoffs due to economics of reduced labor costs, but...
37 minutes ago via [web](#) · [Reply](#) · [View Tweet](#) · [Show Conversation](#)



- [edkohler](#): [@krisjensen](#) I think you'd agree that shareholders are perfectly willing to support the

killing of jobs for profits.

44 minutes ago via [TweetDeck](#) · [Reply](#) · [View Tweet](#) · [Show Conversation](#)



[krisjensen](#): [@edkohler](#) Shareholders invest the money that allows corporations to grow, creating jobs. Where else do jobs originate - public sector?

about 1 hour ago via [web](#) · [Reply](#) · [View Tweet](#) · [Show Conversation](#)

Page 1

Older tweets are temporarily unavailable.

- [Twitter Home](#) ·
- [About Twitter Search](#) ·
- [API](#) ·
- [Jobs](#)
- [Install Search Plugin](#)
- © 2010 Twitter, Inc.